



CTERA C400 / C800 Cloud Attached Storage® Appliances

All-in-One Data Protection, Network Attached Storage and Cloud Storage Gateways

- Integrated On-Site & Off-Site Data Backup and Disaster Recovery
- Robust Enterprise-Grade NAS Features
- Full Remote Access & Management

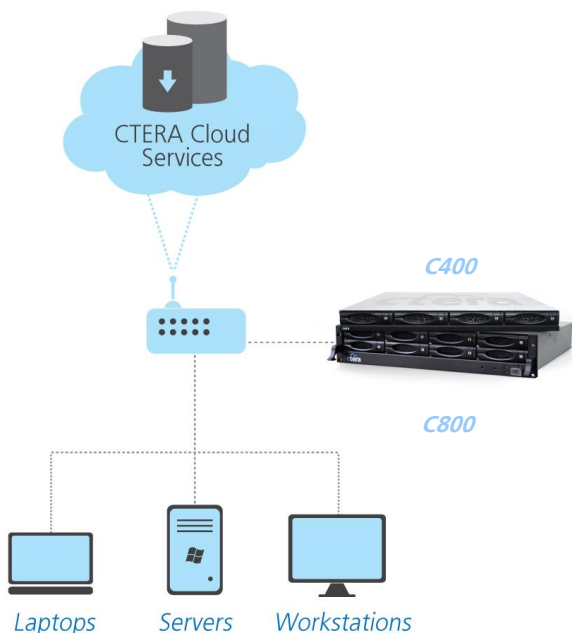


Hybrid Data Protection Appliances with Integrated Cloud Services for SMBs and Branch Offices

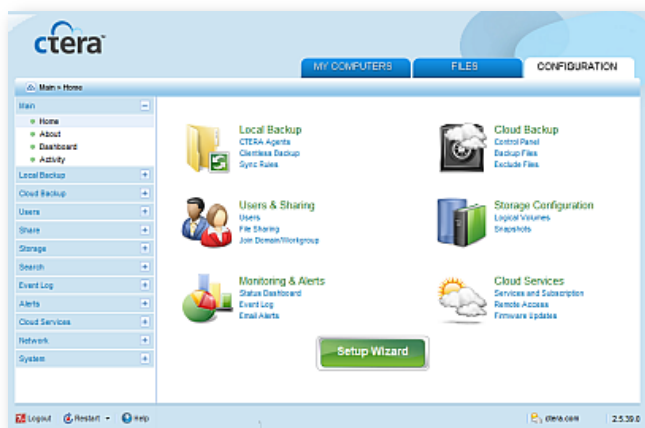
The C400 and C800 appliances from CTERA Networks combine network attached storage (NAS) functionality with comprehensive data protection, providing fast local backup & recovery integrated with cloud storage for disaster recovery, remote access and file sharing.

With the included CTERA backup software, managed agents, remote management capabilities and end-to-end data protection, the C400 and C800 provide a highly cost-effective, easy-to-manage alternative to more expensive, disparate solutions.

Hybrid Cloud & On-Premises	Lightning-fast on-site backup and restore, with integrated, globally de-duplicated, efficient cloud backup that provides an off-site copy for disaster recovery.
Complete Data Protection	Protect the business against data loss and minimize disaster recovery time using a single solution – including roaming laptops, remote users, servers and workstations.
Robust Network Storage	Full-fledged NAS appliances supporting RAID 5/6 for redundancy, inline volume encryption, thin-provisioned snapshots, iSCSI and other enterprise-grade features.
Central Management	Using the CTERA Portal, service providers and enterprise IT can manage and monitor any number of CTERA appliances from a unified Web console.
File-Based Collaboration	Access local and cloud-stored files from anywhere, on the local network or over the Web using a standard browser. Share files with project groups and occasional users through email invitations.



Install the C400 or C800 on your local network for instant hybrid local & cloud backup and disaster recovery



CTERA's easy-to-use, browser-based user interface



About CTERA Networks

CTERA™ Networks revolutionizes data protection and storage for SMBs and enterprise branch offices with Cloud Attached Storage®, a solution that combines cloud storage services with on-premises appliances in an all-in-one solution for backup and recovery, shared storage and file-based collaboration.

CTERA was the first company to introduce cloud storage gateway appliances, and its scalable cloud service delivery platform enables service providers and IT resellers to easily deliver managed cloud storage services to their customers, using the public or private cloud backend of their choice. For more information, visit www.ctera.com.

Appliance Features

- Clientless backup of local desktops and file servers
- Roaming laptop backup with CTERA Workstation Agent
- Application-aware server backup with CTERA Server Agent (optional add-on)
- RAID 0/1/5/6 and JBOD
- NTFS/FAT32/Ext3/Next3 file systems
- UPnP and Bonjour discovery
- Windows file sharing (CIFS), Apple file sharing (AFP), NFS, Time Machine, rsync, WebDAV
- iSCSI target
- FTP server
- Resizable logical volumes
- Thin-provisioned multiple snapshots with Next3
- AES-256 volume encryption
- Microsoft Active Directory support
- Role-based user management
- User disk quotas
- S.M.A.R.T HDD monitoring
- Secure remote management and real-time monitoring
- Custom email alerts and reports
- Full-text search
- Web-based UI requires MS Internet Explorer 7, Firefox 3, Chrome 5 or newer

Cloud Features

- Optimized incremental cloud backup with data compression
- Block-level global de-duplication
- Previous file versions with nested snapshot retention
- Automated scheduled backup
- Folder and attribute-based backup sets
- Restore methods: Windows Previous Versions, Virtual cloud drive, local appliance Web interface, and online via CTERA Portal
- Offline seeding option for assisted initial backup
- Secure Web-based direct access to backups from anywhere
- Cloud Folders with read/write
- Project-based and time-limited invitation-based cloud file sharing
- 256-bit AES encryption of all backups, with SHA-1 fingerprinting and user-specific secret passphrase
- Data transfer over 128-bit SSL connections

CTERA Agent Features

- Roaming laptop backup
- Disk-level "bare metal" backup, recovery to similar hardware or VM
- Optional CTERA Server Agent for Microsoft Exchange, SQL Server, Active Directory
- Locked/open files backup
- Agents centrally managed from the appliance Web interface
- Workstation Agent requires Windows 7, Vista or XP
- Server Agent requires Windows 7, Vista, 2003 SP1, 2008 Server or 2008 R2 Server
- 50 Workstation Agents included

Hardware Specifications

	C400	C800
3.5" SATA HDDs (Hot Swap)	4	8
Storage capacity (raw/RAID6)	12TB / 6TB	24TB / 18TB
USB 2.0 ports	2	2
Gigabit Ethernet Ports	2	2
Power Supply	Single	Dual
Max. Power Consumption	220W	256W
Weight (exc. hard drives)	7.8Kg	13.2Kg
Dimensions (H x W x D), mm	44 x 446.4 x 506 1U rack-mount	88 x 446.4 x 506 2U rack-mount
Operating environment	10°~40°C, 10%~85% humidity non-condensed	
Compliance	FCC, CE, RoHS, WEEE	